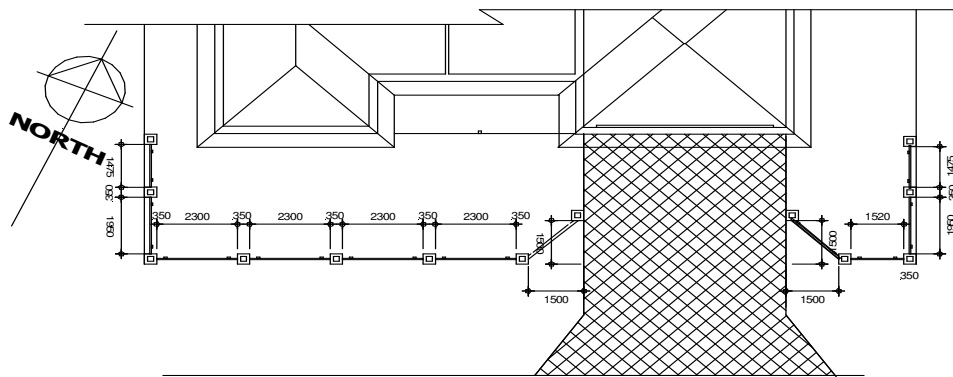


## Fencing Application Information Sheet

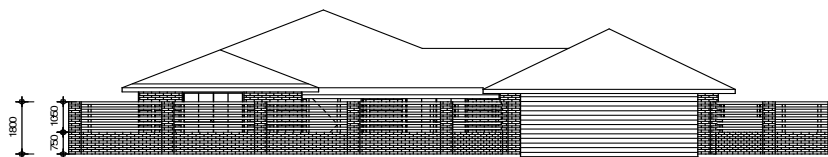
### Front Fence

Front fence applications are to be submitted for all brick fences and any fence located in the front setback area that is more than 750mm in height. Applications should be made on a building application form and contain the following:

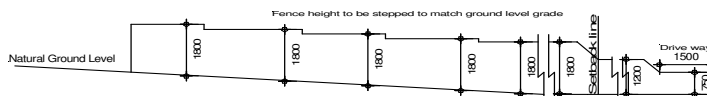
1. Site plan showing all boundary locations and driveways including adjoining lots at a scale of no less than 1:200.
2. At least one elevation of the front fence as viewed from the street at a scale of at least 1:100.
3. All plans to be clearly dimensioned with member sizes.
4. Sectional details showing lateral support of piers.
5. Footing sizes and location.
6. Details of building elements at a scale of no less than 1:50.



Smith Street  
Site Plan At a scale of 1:200

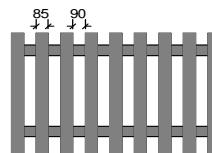


Elevation at a scale of 1:100

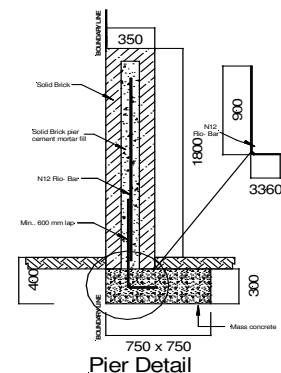


Side Elevation at a scale of 1:100

- Fencing Detail
1. Mortar filled piers 350 x 350
  2. Solid fence height 750mm
  3. Piers height 1800
  4. Panel infill as per detail.
  5. Footing sizes 750 x 750 x 300 - Piers  
300 x 250 under single leaf brickwork.



Panel Detail



Pier Detail

*The Garden City - Quality Lifestyle*