

# Agenda

## SKATE AND BIKE DEVELOPMENT ADVISORY COMMITTEE

**14 SEPTEMBER 2020**

### Notice of Meeting

The next **Skate and Bike Development Advisory Committee Meeting** will take place in the Embleton Room, City of Bayswater Civic Centre, 61 Broun Avenue, Morley, on **Monday, 14 September 2020**, commencing at **6:30pm**.

Yours sincerely



**ANDREW BRIEN**  
**CHIEF EXECUTIVE OFFICER**

**8 September 2020**

---

**TABLE OF CONTENTS**

<b>ITEM</b>	<b>SUBJECT</b>	<b>PAGE NO</b>
	<b>ELECTION OF CHAIRPERSON</b>	<b>3</b>
<b>1.</b>	<b>OFFICIAL OPENING</b>	<b>3</b>
<b>2.</b>	<b>ACKNOWLEDGEMENT OF COUNTRY</b>	<b>3</b>
<b>3.</b>	<b>ATTENDANCE</b>	<b>3</b>
<b>3.1</b>	<b>Apologies</b>	<b>3</b>
<b>3.2</b>	<b>Approved Leave of Absence</b>	<b>4</b>
<b>4.</b>	<b>DISCLOSURE OF INTEREST SUMMARY</b>	<b>4</b>
<b>5.</b>	<b>DELEGATED AUTHORITY BY COUNCIL</b>	<b>4</b>
<b>6.</b>	<b>TERMS OF REFERENCE</b>	<b>4</b>
<b>7.</b>	<b>CONFIRMATION OF MINUTES</b>	<b>4</b>
<b>8.</b>	<b>REPORTS</b>	<b>5</b>
<b>8.1</b>	<b>Skate and Bike Development Advisory Committee Terms of Reference</b>	<b>5</b>
<b>8.2</b>	<b>METRONET Morley Ellenbrook Line - Skate Park Relocation - Wotton Reserve</b>	<b>10</b>
<b>9.</b>	<b>PREVIOUS MATTERS DEALT WITH NOT ON THE AGENDA</b>	<b>21</b>
<b>10.</b>	<b>GENERAL BUSINESS</b>	<b>21</b>
<b>11.</b>	<b>CONFIDENTIAL ITEMS</b>	<b>21</b>
<b>12.</b>	<b>NEXT MEETING</b>	<b>21</b>
<b>13.</b>	<b>CLOSURE</b>	<b>21</b>

## AGENDA

### ELECTION OF CHAIRPERSON

In accordance with Section 5.12 of the *Local Government Act 1995 (WA)*, the members of the Committee are to elect a Chairperson (Presiding Member) from amongst themselves.

#### 1. OFFICIAL OPENING

#### 2. ACKNOWLEDGEMENT OF COUNTRY

In accordance with the City of Bayswater's Reflect Reconciliation Action Plan November 2019-November 2020, the Presiding Member will deliver the Acknowledgement of Country.

##### Noongar Language

*Ngalla City of Bayswater kaatanginy baalapa Noongar Boodja baaranginy, Whadjuk moort Noongar moort, boordiar's koora koora, boordiar's ye yay ba boordiar's boordawyn wah.*

##### English Language Interpretation

*We acknowledge the Traditional Custodians of the Land, the Wadjuk people of the Noongar Nation, and pay our respects to Elders past, present and emerging.*

#### 3. ATTENDANCE

##### Members

Cr Barry McKenna  
Cr Catherine Ehrhardt  
Cr Sally Palmer  
Cr Michelle Sutherland  
Cr Steven Ostaszewsky  
Mr Justin Edwards  
Mr George Linke (Jnr)  
Mr Joshua Eveson  
Mr Andrew Furness  
Mr George Krasnoff  
Ms Laura Drysdale  
Mr Connor Kiss  
Mr Daniel Smith  
Mr Patrick Miller

##### Non-Voting Members

Mr Todd Meyn (Ex-officio)

##### Officers

Mr Doug Pearson	Director of Works and Infrastructure
Mr Jon Vines	Manager Project Services
Mr David Bruce	Coordinator Project Services

#### 3.1 Apologies

**3.2 Approved Leave of Absence**

Nil.

**4. DISCLOSURE OF INTEREST SUMMARY**

In accordance with section 5.65 of the *Local Government Act 1995*:

A member who has an interest in any matter to be discussed at a Council or Committee meeting that will be attended by the member must disclose the nature of the interest -

- (a) in a written notice given to the CEO before the meeting; or
- (b) at the meeting immediately before the matter is discussed.

**5. DELEGATED AUTHORITY BY COUNCIL**

There are no items appearing in this agenda for which the Skate and Bike Development Advisory Committee has been granted delegated authority by Council in accordance with section 5.23(1)(b) of the *Local Government Act 1995*; this meeting is closed to the Public.

**6. TERMS OF REFERENCE**

To be confirmed.

**7. CONFIRMATION OF MINUTES**

Nil.

## 8. REPORTS

### 8.1 Skate and Bike Development Advisory Committee Terms of Reference

<b>Responsible Branch:</b>	Project Services	
<b>Responsible Directorate:</b>	Works and Infrastructure	
<b>Authority/Discretion:</b>	<input type="checkbox"/> Advocacy <input checked="" type="checkbox"/> Executive/Strategic <input type="checkbox"/> Legislative	<input type="checkbox"/> Review <input type="checkbox"/> Quasi-Judicial <input type="checkbox"/> Information Purposes
<b>Voting Requirement:</b>	Simple Majority Required	

#### SUMMARY

For Council to consider the proposed Terms of Reference for the Skate and Bike Development Advisory Committee (SABDAC).

#### OFFICER'S RECOMMENDATION

That Council approves the Terms of Reference as follows for the City of Bayswater Skate and Bike Development Advisory Committee (SABDAC):

ITEM	SKATE AND BIKE DEVELOPMENT ADVISORY COMMITTEE
<b>Committee</b>	Skate and Bike Development Advisory Committee (SABDAC)
<b>Purpose</b>	The purpose of the Committee is to provide guidance and advice in establishing, designing and maintaining existing and future skate parks within the City with the Committee's first priority to find an alternate location for the relocation of the Wotton Reserve Skate Park.
<b>Period</b>	September 2020 to October 2021
<b>Membership</b>	<p>The Committee shall consist of the following endorsed members:</p> <p>(i) 5 x Elected Members;</p> <p>(ii) 9 x Community Members; and</p> <p><u>Non-Voting Members:</u></p> <p>(i) 1 x Ex-officio</p> <p>(ii) Coordinator Project Services</p>
<b>Meetings</b>	<ol style="list-style-type: none"> <li>The Committee will meet on a regular basis as determined by the nominated Committee Members and/or as follows;             <ol style="list-style-type: none"> <li>Meeting Occurrence - Monthly meetings as required;</li> <li>Day of Meeting - To be advised;</li> <li>Time of Meeting - To be advised; and</li> <li>Location of Meeting - City of Bayswater Civic Centre, 61 Broun Avenue, Morley, Embleton Room.</li> </ol> </li> <li>The Committee will elect a Chairperson from endorsed members.</li> <li>All endorsed members of the Committee will have one vote. The Chairperson will have the casting vote and simple majority will prevail.</li> <li>The Chairperson will preside at all meetings. In the absence of the Chairperson, the Chair will be assumed by a person elected by the quorum.</li> </ol>
<b>Liaison Officer</b>	Coordinator Project Services
<b>Delegated Authority</b>	Nil
<b>Sitting Fees</b>	Nil

**BACKGROUND**

The City previously had a SABDAC, however, the Committee was disbanded at the Ordinary Council Meeting of 29 October 2019.

In response to community concerns in relation to the proposed relocation of the Wotton Reserve Skate Park to make way for the new Morley Train Station, Council at its Ordinary Meeting of 21 July 2020 resolved in part as follows:

*"That Council:*

6. *Approves the re-instatement of the Skate and Bike Development Advisory Committee."*

Accordingly, an advertisement calling for nominations for community representatives on the SABDAC was placed on the City's website and in the Eastern Reporter (Bayswater and Bassendean), on Thursday, 30 July 2020 and The Perth Voice on Saturday, 1 August 2020 which closed on Thursday, 13 August 2020.

At the Ordinary Council Meeting of 25 August 2020, Council considered the appointment of Elected Members and community representatives to the SABDAC and resolved in part as follows:

*That Council:*

2. *Appoints the following Elected Members to the Skate and Bike Development Advisory Committee for a period up to October 2021:*
  - (i) *Cr Barry McKenna;*
  - (ii) *Cr Steven Ostaszewskyj;*
  - (iii) *Cr Sally Palmer;*
  - (iv) *Cr Michelle Sutherland; and*
  - (v) *Cr Catherine Ehrhardt.*
3. *Appoints the following community representatives to the Skate and Bike Development Advisory Committee for a period up to October 2021:*
  - (i) *Justin Edwards;*
  - (ii) *George Linke;*
  - (iii) *Joshua Eveson;*
  - (iv) *Andrew Furness;*
  - (v) *George Krasnoff;*
  - (vi) *Laura Drysdale;*
  - (vii) *Connor Kiss;*
  - (viii) *Daniel Smith;*
  - (ix) *Patrick Miller; and*
  - (x) *Todd Meyn (ex officio)*
4. *Endorses the purpose of the Skate and Bike Development Advisory Committee to provide guidance and advice in establishing, designing and maintaining existing and future skate parks within the City with the Committee's first priority to find an alternate location for the relocation of the Wotton Reserve Skate Park."*

The Council's previous SABDAC had the following Terms of Reference:

ITEM	SKATE AND BIKE DEVELOPMENT ADVISORY COMMITTEE
<b>Committee</b>	Skate and Bike Development Advisory Committee
<b>Purpose</b>	The purpose of the Committee is to provide guidance and advice in establishing, designing and maintaining existing and future skate parks within the City.
<b>Period</b>	20 November 2018 to October 2019
<b>Membership</b>	The Committee shall consist of the following endorsed members: (i) 3 x Elected Members; (ii) 6 x Community / industry Members; Non-Voting Members: (i) Coordinator Project Services; (ii) Leisure Planner
<b>Meetings:</b>	Two to four times per annum.
<b>Liaison Officer</b>	Coordinator Project Services
<b>Delegated Authority</b>	Nil
<b>Sitting Fees</b>	Nil

## EXTERNAL CONSULTATION

No consultation has occurred with the public or other agencies on this matter.

## OFFICER'S COMMENTS

The City currently has the following skate park facilities within the City:

- Wotton Reserve (skate, scooter and BMX);
- Crimea Park (skate and scooter); and
- Lightning Park (small BMX track).

The re-established Committee will act as a key stakeholder reference, particularly in response to community concerns in relation to the required relocation of the Wotton Reserve Skate Park to make way for the Morley Train Station as well as considering other related matters.

In view of the priority to focus on the relocation of the Wotton Reserve Skate Park, the following Terms of Reference are proposed:

ITEM	SKATE AND BIKE DEVELOPMENT ADVISORY COMMITTEE
<b>Committee</b>	Skate and Bike Development Advisory Committee (SABDAC)
<b>Purpose</b>	The purpose of the Committee is to provide guidance and advice in establishing, designing and maintaining existing and future skate parks within the City with the Committee's first priority to find an alternate location for the relocation of the Wotton Reserve Skate Park.
<b>Period</b>	September 2020 to October 2021
<b>Membership</b>	The Committee shall consist of the following endorsed members: (i) 5 x Elected Members; (ii) 9 x Community Members; and <u>Non-Voting Members:</u> (i) 1 x Ex-officio (ii) Coordinator Project Services

ITEM	SKATE AND BIKE DEVELOPMENT ADVISORY COMMITTEE
Meetings	<ol style="list-style-type: none"> <li>The Committee will meet on a regular basis as determined by the nominated Committee Members and/or as follows; <ol style="list-style-type: none"> <li>Meeting Occurrence - Monthly meetings as required;</li> <li>Day of Meeting - Tuesday;</li> <li>Time of Meeting - To be advised; and</li> <li>Location of Meeting - City of Bayswater Civic Centre, 61 Broun Avenue, Morley, Embleton Room.</li> </ol> </li> <li>The Committee will elect a Chairperson from endorsed members.</li> <li>All endorsed members of the Committee will have one vote. The Chairperson will have the casting vote and simple majority will prevail.</li> <li>The Chairperson will preside at all meetings. In the absence of the Chairperson, the Chair will be assumed by a person elected by the quorum.</li> </ol>
Liaison Officer	Coordinator Project Services
Delegated Authority	Nil
Sitting Fees	Nil

## LEGISLATIVE COMPLIANCE

- Code of Conduct 2018 Council Members and Committee Members;
- Asset Management - Infrastructure Assets Policy

## OPTIONS

In accordance with the City's Risk Management Framework, the following options have been assessed against the City's adopted risk tolerance. Comments are provided against each of the risk categories.

Option 1	<b>That Council approves the Terms of Reference as follows for the City of Bayswater Skate and Bike Development Advisory Committee (SABDAC):</b>	
	<b>ITEM</b>	<b>SKATE AND BIKE DEVELOPMENT ADVISORY COMMITTEE</b>
	Committee	Skate and Bike Development Advisory Committee (SABDAC)
	Purpose	The purpose of the Committee is to provide guidance and advice in establishing, designing and maintaining existing and future skate parks within the City with the Committee's first priority to find an alternate location for the relocation of the Wotton Reserve Skate Park.
	Period	September 2020 to October 2021
	Membership	<p>The Committee shall consist of the following endorsed members:</p> <ol style="list-style-type: none"> <li>5 x Elected Members;</li> <li>9 x Community Members; and</li> </ol> <p><u>Non-Voting Members:</u></p> <ol style="list-style-type: none"> <li>1 x Ex-officio</li> <li>Coordinator Project Services</li> </ol>
	Meetings	<ol style="list-style-type: none"> <li>The Committee will meet on a regular basis as determined by the nominated Committee Members and/or as follows; <ol style="list-style-type: none"> <li>Meeting Occurrence - Monthly meetings as required;</li> <li>Day of Meeting - To be advised;</li> <li>Time of Meeting - To be advised; and</li> </ol> </li> </ol>



		<p>(d) Location of Meeting - City of Bayswater Civic Centre, 61 Broun Avenue, Morley, Embleton Room.</p> <p>2. The Committee will elect a Chairperson from endorsed members.</p> <p>3. All endorsed members of the Committee will have one vote. The Chairperson will have the casting vote and simple majority will prevail.</p> <p>4. The Chairperson will preside at all meetings. In the absence of the Chairperson, the Chair will be assumed by a person elected by the quorum.</p>
	Liaison Officer	Coordinator Project Services
	Delegated Authority	Nil
	Sitting Fees	Nil

Risk Category	Adopted Risk Appetite	Risk Assessment Outcome
Strategic Direction	Moderate	Low
Reputation	Low	Low
Governance	Low	Low
Community and Stakeholder	Moderate	Low
Financial Management	Low	Low
Environmental Responsibility	Low	Low
Service Delivery	Low	Low
Organisational Health and Safety	Low	Low

Conclusion	This option will ensure that the initial focus is on determining an alternate site for the Wotton Reserve Skate Park and allow a Chairperson to be nominated from amongst the endorsed Members.
------------	---

Option 2	That Council approves alternate Terms of Reference for the City of Bayswater Skate and Bike Development Advisory Committee (SABDAC):		
Risk Category		Adopted Risk Appetite	Risk Assessment Outcome
Strategic Direction		Moderate	Dependent on Terms of Reference adopted.
Reputation		Low	
Governance		Low	
Community and Stakeholder		Moderate	
Financial Management		Low	
Environmental Responsibility		Low	
Service Delivery		Low	
Organisational Health and Safety		Low	
Conclusion	This option allows alternate Terms of Reference to be nominated.		

## FINANCIAL IMPLICATIONS

Not applicable.

## STRATEGIC IMPLICATIONS

In accordance with the City of Bayswater Strategic Community Plan 2017-2027 (as amended), the following applies:

Theme: Our Community  
 Aspiration: An active and engaged community  
 Outcome C1: A strong sense of community through the provision of quality services and facilities.

## CONCLUSION

The adoption of the SABDAC Terms of Reference will set out the purpose and frequency of meetings in order for the Committee to meet its first priority of finding an alternative location for the relocation of the Wotton Skate Park.

*In relation to Item 8.2, Mr Glen Finn, Ms Johanna Dowsett and Mr Bradley Murphy from METRONET will be in attendance at 7:00pm to provide the Committee with an update on the relocation of the Wotton Reserve Skate Park.*

## 8.2 METRONET Morley Ellenbrook Line - Skate Park Relocation - Wotton Reserve

<b>Responsible Branch:</b>	Project Services	
<b>Responsible Directorate:</b>	Works and Infrastructure	
<b>Authority/Discretion:</b>	<input type="checkbox"/> Advocacy <input checked="" type="checkbox"/> Executive/Strategic <input type="checkbox"/> Legislative	<input type="checkbox"/> Review <input type="checkbox"/> Quasi-Judicial <input type="checkbox"/> Information Purposes
<b>Voting Requirement:</b>	Simple Majority Required	
<b>Refer:</b>	OCM : 21 July 2020 : Item 10.1.1	

### SUMMARY

The skate park and dirt jumps at Wotton Reserve are required to be relocated as they are currently on the METRONET selected location for the new passenger car park associated with the future Morley Train Station.

METRONET on behalf of the State Government has committed funding toward the relocation of skate park facilities, however the level of funding, relocation site timing of works and method of delivering the new skate park is yet to be finalised.

In April 2020 the METRONET team undertook preliminary community engagement in the form of a survey to understand what the community think the future should look like around Morley Station. 31% of survey respondents indicated that they want the new location for the skate park to be as close as possible to the existing location.

A number of sites may be considered as a potential new location for Wotton skate park.

The City is yet to engage key stakeholders in relation to the skate park relocation. In response to community concerns regarding the relocation of Wotton Skate Park, Council at its Ordinary Meeting held 21 July 2020 approved the reinstatement of the Skate and Bike Development Advisory Committee. A key focus for this committee will be the relocation of current facilities.

Discussions are ongoing between the City and METRONET in order to identify a preferred location, confirm an appropriate project budget and finalise who will deliver the project.

### OFFICER'S RECOMMENDATION

**That Council:**

- 1. Request the Chief Executive Officer seeks written confirmation from METRONET as to the financial terms and method of delivery offered to the City by the State Government to appropriately relocate the current Wotton Skate Park (to a location yet to be confirmed) in order to provide for the Morley Train Station customer parking;**
- 2. Authorises the Chief Executive Officer to engage with key stakeholders to determine a preferred location to relocate the current skate park facilities provided at Wotton Reserve, Embleton.**
- 3. Requests a further report following State Government confirmation of terms and a preferred location to relocate Skate Park facilities following community engagement by December 2020.**

## BACKGROUND

### Morley-Ellenbrook Line

As part of METRONET, the State Government is committed to delivering the Morley-Ellenbrook Line to give people living and working in Perth's north-eastern suburbs more transport choice. The new line will start at Bayswater Station and end at a new Ellenbrook Station, with new stations at Whiteman Park, Malaga, Noranda and Morley.

### Morley Station Precinct Concept Master Plan

METRONET has engaged consultants Urbis to develop the Morley Station Precinct Concept Master Plan to set the design vision and high-level roadmap for the long-term land uses, planning and infrastructure delivery around the future Morley Station to enhance the area and connections to Morley Activity Centre and Galleria Shopping Centre. The masterplan is due to be completed by the end of this year.

While there is an opportunity through the master planning process to influence some aspects of the urban environment, the METRONET team has made it clear that the location of the new station and a new multi-storey passenger car park are fixed and cannot be moved.



The location of the new multi-storey passenger car park is on City owned land on Wotton Reserve. This will require the State Government to acquire the land from the City.

### Skate Park

The skate park, which for the purposes of this report includes the skate park and the BMX dirt jumps, is considered high quality, well used and a well renowned asset for the City and the community. However it is required to be relocated as it conflicts with the selected location for the new passenger car park. The City has received correspondence from METRONET stating their intention to work with the City to identify a new location for the skate park as part of the master planning process.

In response to community concerns about the relocation of the skate park, Council at its Ordinary Meeting held 21 July 2020, re-established the Skate and Bike Development Advisory Committee (SABDAC) to provide guidance and advice in establishing, designing and maintaining existing and future skate parks in the City. The relocation of the Wotton facility will be a primary focus.

### Funding the Relocation of the Skate Park

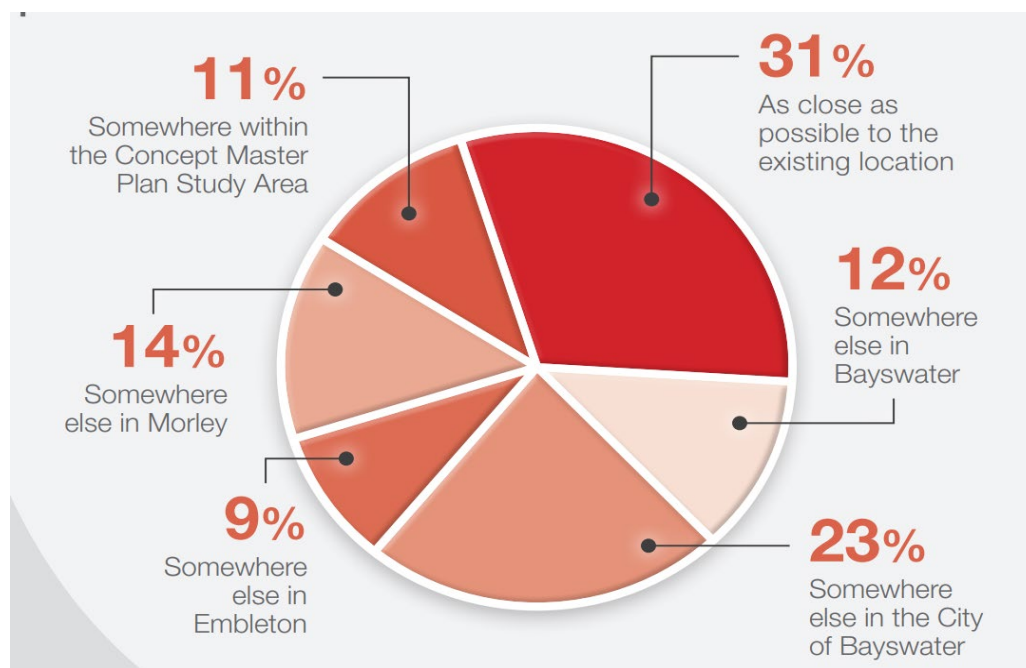
The State Government is responsible for funding the relocation of the skate park to a standard similar to the current facility ('like for like'). The METRONET team has stated that there is an opportunity for the City to access funding provided to the Morley-Ellenbrook Line project to deliver the new skate park. The budget amount allocated will be confirmed in the State Budget in October 2020,

### Timeframe

The Morley-Ellenbrook Line has now been endorsed by the State Cabinet and the project is in the delivery phase. While there is a degree of certainty that the project will proceed, at this stage there is little certainty about when the new Morley Station and the associated infrastructure will be constructed, including the closure and removal of the current skate park. Preliminary estimates envisage construction commencing at the current skate park site around March 2021. In order to minimise disruption to skate park users, it is important that a suitable new location is found and works are commenced in a timely manner. Ideally, it would be preferable if the new skate park was constructed prior to the demolition of the existing one and the City will be advocating for this with the METRONET team.

### Community Survey

In April 2020 the METRONET team undertook preliminary community engagement in the form of a survey to understand what the community think the future should look like around Morley Station. A total of 262 responses were received. As part of the survey, the community were asked where they would like to see the skate park relocated. The graph below illustrates the feedback received.



### **EXTERNAL CONSULTATION**

The City is yet to engage key stakeholders in relation to relocating the skate park facilities. It is noted that a number of social media groups have been created providing opinion and feedback in relation to the Wotton site and broader skate / scooter / BMX facilities within the City.

Engaging and key stakeholders will be a critical component in identifying and considering appropriate sites for relocating the current Wotton skate park facilities.



## OFFICER'S COMMENTS

The Skate and Bike Development Advisory Committee (SABDAC) will play a key role in advising Council regarding the appropriate relocation of skate and bike park facilities currently located at Wotton Reserve.

The current skate park at Wotton Reserve occupies an approximate area of 80m x 40m with the BMX track occupying a similar space alongside the skate surface and vertical ramp. There may be an opportunity to reconfigure the current layout in order to provide similar facilities while occupying less space on the ground.



A range of factors including but not limited to the following will need to be considered:

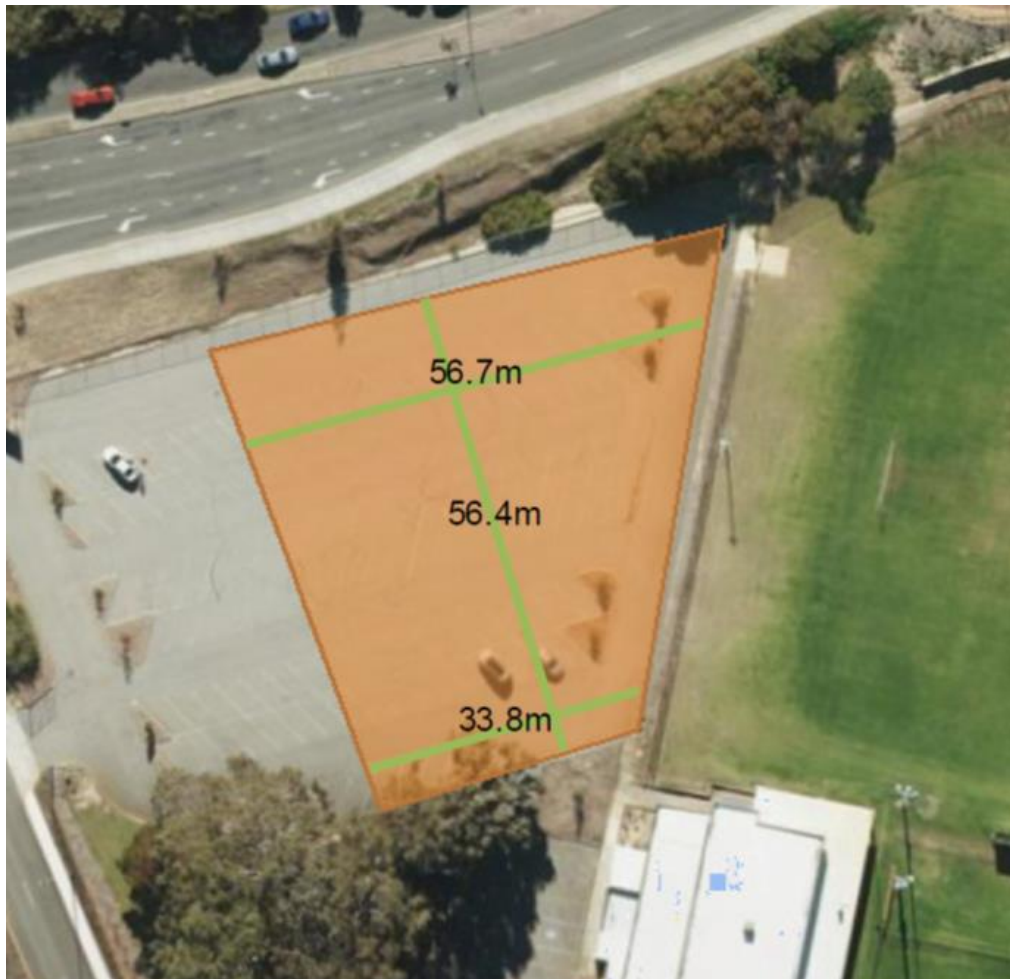
- Land Tenure and Permitted Purpose;
- Available public open space;
- Time Between Closing Old and Opening Relocated Skate Facility;
- Complimentary / Competing recreational activities / priorities on site;
- Type and range of skate / scooter / bmx facilities;
- Size and layout of space required;
- Proximity to Current Site;
- Cost of Facility Provision;
- Accessibility;
- Public Transport links;
- Proximity to housing;

- Impact On Local Residents / Other Site Users;
- Community Acceptance;
- Parking;
- Public Toilets;
- Lighting;
- Passive Surveillance;
- Emergency Response; and
- Any Loss of Existing Green Space.

#### City's Preliminary Site Analysis

City officers have undertaken preliminary site investigations based on community feedback to the METRONET survey conducted in April 2020. A number of potential locations have been identified:

1. Wotton Reserve North (Current Car Park Servicing the Reserve)



PROS	CONS
<ul style="list-style-type: none"><li>• Within Current Wotton Site</li><li>• Public Open Space</li><li>• Would Not Result in a reduction of Useable Green Space</li><li>• Sufficient Size</li><li>• Minimise Facility Down Time</li><li>• Existing Hardstand (fairly level)</li><li>• Access to Public Transport (bus / train)</li><li>• Passive Surveillance</li><li>• Public Toilets</li><li>• Opportunity to Retain Some Parking (50+ Bays)</li><li>• Opportunity to Create A Buffer (car park) From Residents</li></ul>	<ul style="list-style-type: none"><li>• Proximity to Residents</li><li>• Impact on Existing Parking</li><li>• Level of Community Acceptance</li><li>• Potential Site Access During METRONET Construction</li><li>• Potential Objection from Other Stakeholders</li><li>• Additional Cost To Amend Current Parking</li></ul>

2. Wotton Reserve South (Current Sump Drain off Wotton Street)





PROS	CONS
<ul style="list-style-type: none"> <li>• Within Current Wotton Site</li> <li>• Public Open Space</li> <li>• Sufficient Size</li> <li>• Minimise Facility Down Time</li> <li>• Proximity Away From Housing</li> <li>• Access to Public Transport (bus / train)</li> <li>• Retains Reserve Parking on Site</li> <li>• Passive Surveillance</li> <li>• Public Toilets</li> <li>• Retains Parking</li> </ul>	<ul style="list-style-type: none"> <li>• May not be sufficient space available</li> <li>• Drainage To Be Retained On Site</li> <li>• Probable Cost of Construction (in retaining appropriate drainage)</li> <li>• Time To Construct</li> <li>• Potential Site Access During Metronet Construction</li> <li>• May Result in a reduction of Useable Green Space</li> <li>•</li> </ul>

3. Houghton Park (Corner of Purley and Alderhurst)



PROS	CONS
<ul style="list-style-type: none"> <li>• Public Open Space</li> <li>• Sufficient Size</li> <li>• Minimise Facility Down Time</li> <li>• Public Toilets</li> <li>• Parking</li> </ul>	<ul style="list-style-type: none"> <li>• Proximity to Residents</li> <li>• Level of Community Acceptance</li> <li>• Would Result in a reduction of Useable Green Space</li> <li>• Potential Conflict With other Site Usage</li> <li>• Limited Access to Public Transport</li> </ul>



## 4. Broun Park (Adjacent to Bayswater Waves)



PROS	CONS
<ul style="list-style-type: none"> <li>• Public Open Space</li> <li>• Sufficient Size</li> <li>• Minimise Facility Down Time</li> <li>• Parking</li> <li>• Access to Public Transport (bus)</li> </ul>	<ul style="list-style-type: none"> <li>• Proximity to Residents</li> <li>• Level of Community Acceptance</li> <li>• Would Result in a reduction of Useable Green Space</li> <li>• Potential Conflict With other Site Usage</li> <li>• Area Used for Waves Overflow Parking</li> <li>• No Public Toilets</li> </ul>

METRONET have also undertaken an assessment of alternative locations and will present their findings to the Committee.

#### Other Locations

Other potential locations may be considered by the Skate and Bike Park Development Advisory Committee to accommodate the relocated skate park facilities.

#### Design and Delivery of the Skate Park

METRONET on behalf of the State Government has committed funding toward the relocation of skate park facilities, however the level of funding, timing of works and method of delivering the new skate park is yet to be finalised.

The City is yet to commit to design and deliver the new skate park at this stage pending further information from METRONET. There is significant risk to the City in committing to design and deliver the new skate park as the City will not be in a position to know the actual cost of the skate park until detailed design and planning has been undertaken. If the City was to commit to design and deliver the skate park, it will be important for the City to receive assurance from the State Government that they will pay the full cost of the new skate park as the originally indicated provisional sum is likely to be inadequate for design, site works and construction. In the event that the City takes on responsibility for the design and delivery of the skate park, it is expected to require an additional 0.5FTE staffing resource for the duration of the project (approximately 12 months).

The City has provided the following project cost estimates to METRONET for consideration:

Item	Detail	Cost Estimate
Design of the Skate park	Concept	\$44,550
	Detailed	\$66,825
Construction of the Skate park	Skate park Including 10ft Bowl	\$1,400,000
	BMX Dirt Jumps	\$150,000
	Sub Total	\$1,661,375
10% Project Contingency	Standard Project Contingency	\$160,000
Additional City Project Officer	0.5FTE for a 12 month period	\$45,000
	<b>Total</b>	<b>\$1,866,375</b>

### Delivery Terms

The City are yet to receive any proposal from METRONET in terms of a preferred delivery approach and funding model to provide a like for like skate park facility. It is still to be advised whether the City or METRONET will deliver the project to relocate the Wotton Skate Park and what funding will be available to cover all associated costs.

The \$1,866,375 above assumes relocation to well drained level ground and does not include an allowance for new site preparation and ground work.

### **LEGISLATIVE COMPLIANCE**

It is understood that the State Government is open to acquire the land currently accommodating the Wotton Skate Park by either agreed purchase or land swap with the City. A market valuation for the site is currently being determined.

It should also be noted that if either party cannot agree appropriate land tenure, State Government has the ability to take possession of the site and commence work.

### **OPTIONS**

In order to appropriately consider the position of Council in relation to the relocation of Skate Park facilities currently provided at Wotton Reserve the following options are provided.

In accordance with the City's Risk Management Framework, the following options have been assessed against the City's adopted risk tolerance. Comments are provided against each of the risk categories.

<b>Option 1</b>	<b>That Council:</b> <ol style="list-style-type: none"> <li>1. Request the Chief Executive Officer seeks written confirmation from METRONET as to the financial terms and method of delivery offered to the City by the State Government to appropriately relocate the current Wotton Skate Park (to a location yet to be confirmed) in order to provide for the Morley Train Station customer parking;</li> <li>2. Authorises the Chief Executive Officer to engage with key stakeholders to determine a preferred location to relocate the current skate park facilities provided at Wotton Reserve, Embleton.</li> <li>3. Requests a further report following State Government confirmation of terms and a preferred location to relocate Skate Park facilities following community engagement.</li> </ol>	
<b>Risk Category</b>	<b>Adopted Risk Appetite</b>	<b>Risk Assessment Outcome</b>
Strategic Direction	Moderate	Low
Reputation	Low	Low
Governance	Low	Low
Community and Stakeholder	Moderate	Low
Financial Management	Low	Low
Environmental Responsibility	Low	Low
Service Delivery	Low	Low
Organisational Health and Safety	Low	Low
<b>Conclusion</b>	It is considered that this option presents the lowest risk to the City as all terms are declared in advance and key stakeholders have an opportunity to comment on any sites proposed for relocation.	

<b>Option 2</b>	<b>That Council request the Chief Executive Officer seeks written confirmation from METRONET as to the financial terms and method of delivery offered to the City by the State Government to appropriately relocate the current Wotton Skate Park facility to a preferred location (to be identified by the City in conjunction with Skate and Bike Development Advisory Committee and endorsed by Council)</b>	
<b>Risk Category</b>	<b>Adopted Risk Appetite</b>	<b>Risk Assessment Outcome</b>
Strategic Direction	Moderate	Low
Reputation	Low	High
Governance	Low	Low
Community and Stakeholder	Moderate	High
Financial Management	Low	Low
Environmental Responsibility	Low	Low
Service Delivery	Low	Moderate
Organisational Health and Safety	Low	Low
<b>Conclusion</b>	It is considered that this option has high community and stakeholder risk as impacted stakeholders will not have had an opportunity to comment on the identified location.	

## FINANCIAL IMPLICATIONS

METRONET on behalf of the State Government has committed funding toward the relocation of like for like skate park facilities, however the level of funding is yet to be confirmed.

The City has \$50,000 identified in the Long Term Financial Plan for Skate / BMX Parks in 2023/24 and a further \$50,000 in 2026/27.

An amount of existing Officer time has been committed to the project to date.

## STRATEGIC IMPLICATIONS

In accordance with the City of Bayswater Strategic Community Plan 2017-2027 (as amended), the following applies:

Outcome C1: Plan and Provide A Range of Community Facilities To Meet Current and Future Needs

**CONCLUSION**

The current skate park and dirt jumps at Wotton Reserve are required to be relocated as they conflict with the METRONET selected location for the new passenger car park associated with the future Morley Train Station.

METRONET on behalf of the State Government has committed funding toward the relocation of skate park facilities, however the level of funding, timing of works and method of delivering the new skate park is yet to be finalised.

A number of potential locations have been identified however the City is yet to engage key stakeholders in relation to the skate park relocation.

Discussions are ongoing between the City and METRONET in order to identify a preferred location, confirm an appropriate project budget and finalise who will deliver the project.

It is recommended that the City seeks clarification from the State Government as to the terms of delivery offered to the City by way of financial and delivery method to relocate the Wotton Skate Park from its current location and to engage key stakeholders in order to determine a preferred location to relocate the skate park facilities.

**9. PREVIOUS MATTERS DEALT WITH NOT ON THE AGENDA**

Nil.

**10. GENERAL BUSINESS****11. CONFIDENTIAL ITEMS**

Nil.

**12. NEXT MEETING**

The next meeting of the Skate and Bike Development Advisory Committee will take place in the Embleton Room, City of Bayswater Civic Centre, 61 Broun Avenue, Morley, on a date and time to be confirmed.

**13. CLOSURE**